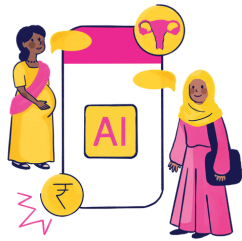


# WHAT SETS US APART?

## RESEARCH-BACKED

We use RCTs, A/B tests, and surveys to study how health, finances, and agency interact for 200,000+ community members – shaping smarter, more effective programs.



## AI-ENABLED

We build localized AI tools on WhatsApp to deliver healthcare guidance and connect women to jobs – offering accurate, relevant support at their fingertips

## LOCAL-CENTRIC

Over 75% of our team comes from the communities we serve, giving us unmatched insight into their unique challenges and opportunities.



# WHY DONATE TO US ?

## A DECADE OF TRUST

With 10+ years on the ground and a 75% local team, we drive sustainable, culturally rooted change.

## GLOBAL GOALS, LOCAL ACTION

We advance gender equity, health, and economic empowerment, aligned with SDG 3, SDG 5, and SDG 8.

## DATA-DRIVEN IMPACT

We back every intervention with evidence, using RCTs, surveys, and monitoring systems.

## SCALABILITY THROUGH MOBILE

With phone-based solutions, we reach over 2 million women, delivering healthcare and jobs at scale.

# JOIN US

## Your donation powers transformation.

Help us expand healthcare, digital access, and economic opportunity—unlocking the power of women’s agency.

[contact@mynafoundation.com](mailto:contact@mynafoundation.com)

+91 720 888 0031

+91 932 612 7527

Unit No. 10/11,

Building No. 34/A, GM Link Road,  
Natwar Parekh Compound,  
Govandi (W), Mumbai,  
Maharashtra, India – 400 043

[www.mynamahila.com](http://www.mynamahila.com)



SCAN TO SUPPORT  
OUR WORK



# MYNA MAHILA

Harnessing research, AI, and grassroots expertise to drive women’s agency



@mynamahila

# WHO WE ARE



## OUR MISSION

Our mission is to harness the power of research, AI, and grassroots expertise to drive women's agency through the three pillars of health-seeking behavior, digital literacy, and economic empowerment.



## OUR VISION

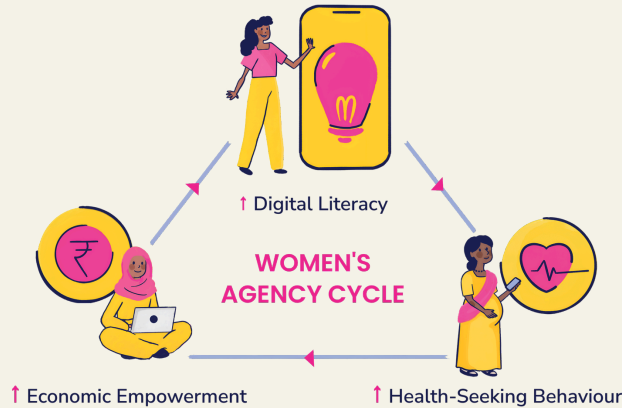
We envision a world where at least 25 percent, around 100 million, of women previously excluded from healthcare, paid work, or digital access can now make decisions about their bodies, jobs, and futures – driving social and economic transformation.

## OUR MODEL

Agency Is a Cycle—Not a Destination

- We believe agency is dynamic
- Access to healthcare increases chances of paid work.
- Financial independence encourages digital literacy.
- Digital inclusion strengthens confidence to seek healthcare and work.

Our 5-step model—Identify, Educate, Support, Empower, Inspire—guides women from limitations to independent agency. We use research to test which pathways create the strongest, most lasting change.



## OUR PROGRAMMES



**The Speak Myna** Interactive sessions that spark open, honest conversations on sexual and reproductive health in schools, colleges, and communities.



**Myna Clinics** Mobile units delivering affordable sexual and reproductive healthcare directly to urban poor communities



**M-Health A** smartphone platform that supports women in managing their health.



**Rani Work** A digital platform connecting women to flexible work opportunities



**Myna Bolo** A WhatsApp-based AI chatbot offering personalized sexual and reproductive health guidance to women.



# OUR IMPACT



We have reached over

**1.5** million women and girls—  
we're just getting started

More women seeking health services

**29,574** consultations  
delivered

Higher digital confidence

**19,175** M-Health  
app users

New income streams

**1,431** women working from  
home, earning ₹1.3  
crore collectively